

(ECG- )

:

aminuga@yahoo.com

-

:

:

lead

200 Hz DC (LP) 0.1 Hz (HP)

Data Acquisition

50 Hz

real time

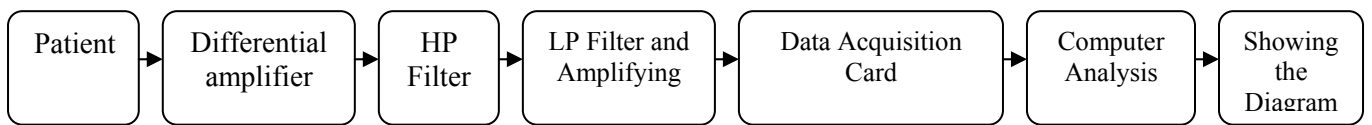
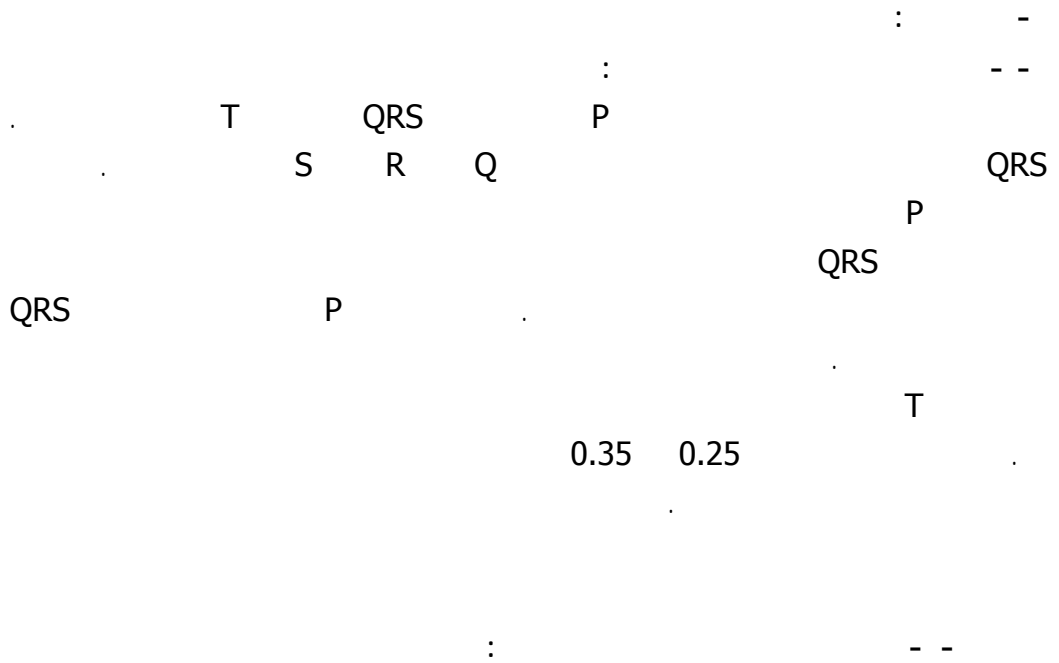
*ECG, Data Acquisition, Lead :*

: -

ECG-

... ,CCU,ICU

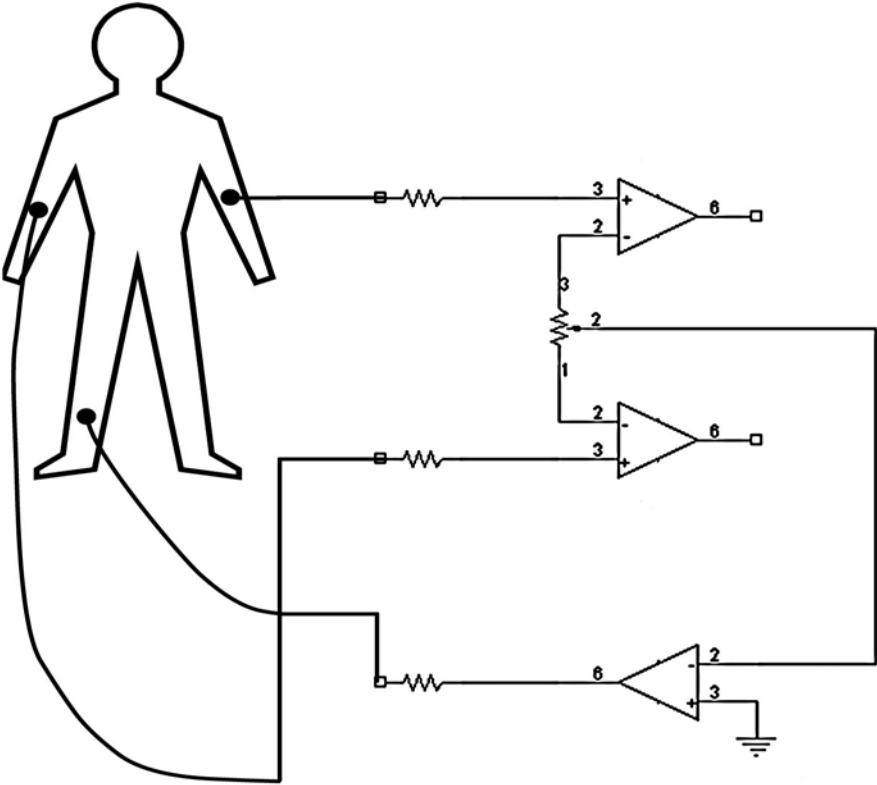
:



Instrumentation OpAmp

Analog Devices AD620 differential  
 AD620 20uV  
 300 uV  
 1000 1  
 ±18 V ±2.3 V IC  
 200  
 ECG R 50 Hz  
 50 Hz  
 Twisted

driven right leg



Driven Right Leg -

displacement

2  $\mu$ A

5 M $\Omega$

:FIR

50 Hz

BRF

FIR

50 Hz

:FFT

( Fast Fourier Transform ) FFT

50Hz 0Hz 250 0  
200Hz ( 200 150 100 ) 50 Hz  
250 200  
50 Hz

( 50 Hz )  
( inverse fft ) ifft

LP HP  
0.1 Hz dc HP RC  
200 Hz 100 LP  
Data Acquisition 2

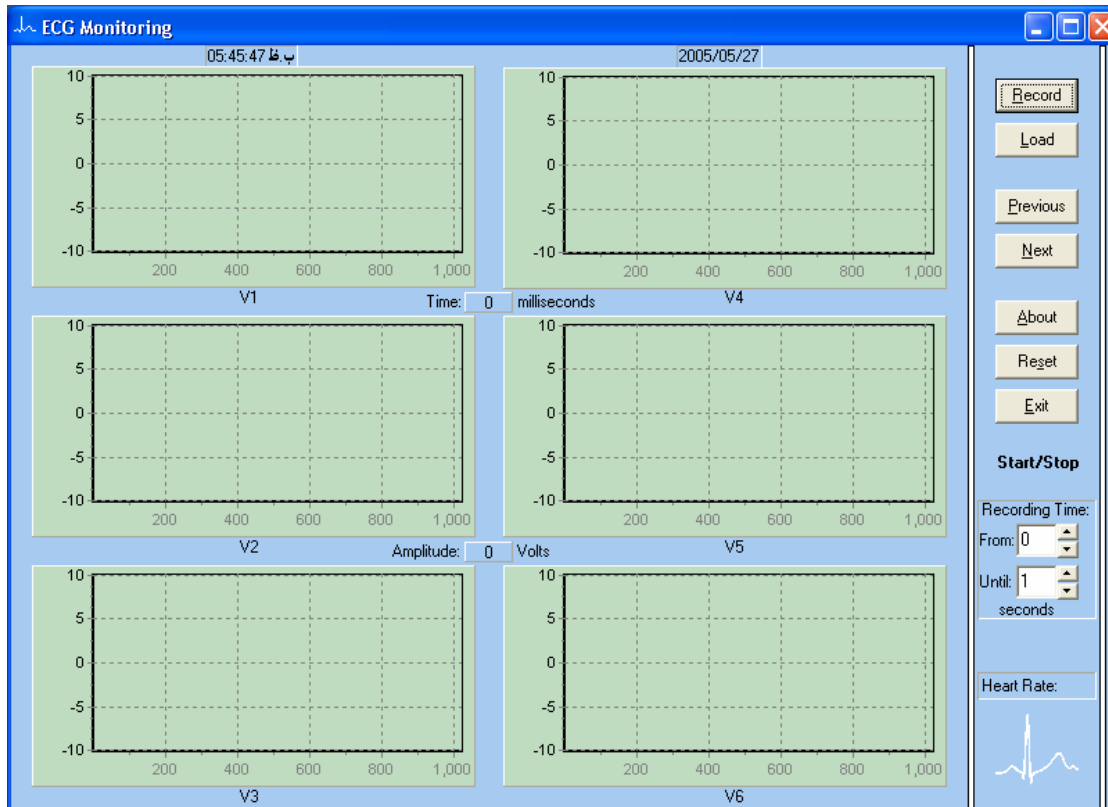
Data Acquisition 5 v

: - - -

real time

scroll

( load ) ( save )



V6 V1

Previous Next

mouse

ecg

Load Save

HIGH LOW

[1]

[2]

:

[3]

[4] Medical Instruments John G. Webster 3<sup>rd</sup> Edition 1998

[5] IEEE transaction biomedical engineering: 60 Hz interference in  
electrocardiography by: J. C. & J. G. Webster